

616 Palmerston Drive Piedmont, SC
29673

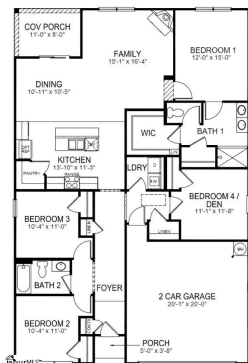
**(843) 478-
8061**



\$299,900 :: 4 Bedrooms / 2 Bathrooms



3344MLS*



Subdivision: Cambridge Creek
Middle School: Woodmont
High School: Woodmont
Square Feet: 1799
Home Style:
Year Built: 2024
MLS ID: 1531391



Description of property at 616 Palmerston Drive:

Introducing Cambridge Creek! This beautiful, tree-lined, community is centrally located between Greenville and Anderson, both areas feature shops, restaurants and amenities! Plus, you will never be too far from home with Home is Connected. Your new home is built with an industry-leading array of smart home products that keep you connected with the people and place you value most! Cambridge Creek offers the best of both worlds with its quaint small-town charm yet big city convenience, with easy access to all the desired locations for shopping, dining, parks, golf, hospitals, and more! This exquisite 4-bedroom, 2-bath (Cali Plan) residence offers the perfect blend of modern amenities and timeless elegance. Enjoy spacious and comfortable living in four generously sized bedrooms, with 2 baths. Perfect for families or guests. The masterfully designed bathrooms feature top-notch finishes and fixtures, ensuring your daily comfort. The gourmet kitchen is a chef's delight, featuring stunning granite countertops that provide both beauty and durability. With the Tankless Hot Water Heater, say goodbye to cold showers! The tankless hot water heater ensures a constant supply of hot water on-demand.

Lot features

- 1st Floor • Laundry Room • Carpet • Luxury Vinyl Tile/Plank • Vinyl • Electric
- Smoke Detector(s) • Prewired • Dishwasher • Disposal • Free-Standing Gas Range • Microwave
- Tankless Water Heater • Composition • Playground • Pool • By-Laws • Common Area Ins.
- Pool • Restrictive Covenants • Street Lights • Ceiling - Smooth • Granite Counters
- Open Floorplan • Walk-In Closet(s) • Pantry • Cable Available • None • Tilt Out Windows
- Vinyl/Aluminum Trim • Insulated Windows • Attic Stairs Disappearing • 1/2 Acre Or Less • Traditional

This listing was provided courtesy of D.R. Horton

https://homesforsalelistings.net/properties/616-palmerston-drive/piedmont/sc/29673/MLS_ID_1531391

