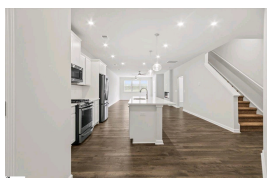


642 Isleworth Lane Greenville, SC 29611

\$287,978 :: 3 Bedrooms / 2.5 Bathrooms

(843) 478-8061



Subdivision: Wyndermere
Middle School: Tanglewood
High School: Carolina
Square Feet: 1999
Home Style:
Year Built: 2024
MLS ID: 1534170



Description of property at 642 Isleworth Lane:

NEW STANLEY MARTIN TOWNHOME! Welcome to Wyndermere..... a quaint sidewalk lined gated community with low maintenance townhome living just minutes to the heart of downtown Greenville. Our townhomes have primary bedroom suites located on the first floor as well as a finished 2 car garage. The Gaines presents a sleek and charming design in this two-story townhome, where elegance meets comfort. The main level bathes the conjoined family room, sunroom, and kitchen in warm, natural light, thanks to an abundance of windows. The kitchen, designed with an open concept, features a large island, quartz counter tops, an upgraded stainless appliance package - including a fridge, and ample space, perfect for family and guests to mingle and enjoy snacks. The back patio offers a delightful retreat for summer days, while select homes come with an electric fireplace, adding a cozy touch during winter months. Upstairs, two bedrooms boast walk-in closets, offering ample storage, and the primary suite on the main level has been meticulously designed to ensure sweet dreams and maximum comfort.

Lot features

- Electric Dryer Hookup • Washer Hookup • Laundry Room • Carpet • Ceramic Tile • Laminate
- Prewired • Dishwasher • Disposal • Free-Standing Gas Range • Refrigerator • Ice Maker
- Microwave • Tankless Water Heater • Common Areas • Gated • Sidewalks • Lawn Maintenance
- Common Area Ins. • Maintenance Structure • Insurance • Maintenance Grounds • By-Laws
- High Ceilings • Ceiling Fan(s) • Tray Ceiling(s) • Open Floorplan • Walk-In Closet(s)
- Countertops à€“ Quartz • Pantry • Cable Available • Circulating • Tilt Out Windows
- 1/2 Acre Or Less • Sidewalk • Traditional

This listing was provided courtesy of SM South Carolina Brokerage, LLC

https://homesforsalelistings.net/properties/642-isleworth-lane/greenville/sc/29611/MLS_ID_1534170

