

# 240 Penick Drive Duncan, SC 29334

**\$639,000 :: 6 Bedrooms / 4 Bathrooms**

**(843) 478-8061**

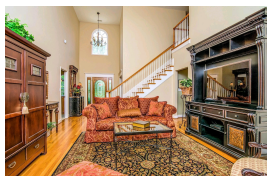
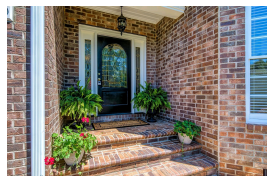


**Subdivision:** Other  
**Middle School:** Florence Chapel  
**High School:** James F. Byrnes  
**Square Feet:** 3805  
**Home Style:**  
**Year Built:** 2000  
**MLS ID:** 1534195



### Description of property at 240 Penick Drive:

Come and See this Fabulous Brick Home in River Falls Plantation! You'll love the spacious floor plan and plenty of bedrooms and baths for a large family. The master bedroom has beautiful windows by a sitting area , double closets , double vanities , jetted tub , separate shower and soaring ceilings . The kitchen , living room , dining room , laundry and a second bedroom with access to the full hall bath are also on the main floor. Upstairs there are 3 more bedrooms and a full bath with double vanity. This home also has a full finished basement with 995 sq ft of space that includes another bedroom , full bath and kitchenette. It's ample space for an in-law suite or an amazing teens game room with separate living room set up away from the main level. This Golf Community also offers a pool , clubhouse and tennis for the family to enjoy. Call soon to schedule your showing , you don't want to miss this one!!



### Lot features

- Under Ground Irrigation
- 1st Floor
- Electric Dryer Hookup
- Sink
- Stackable Accommodating
- Walk-in
- Washer Hookup
- Laundry Room
- Carpet
- Ceramic Tile
- Wood
- Electric
- Heat Pump
- Security System Owned
- Cooktop
- Dishwasher
- Disposal
- Dryer
- Freezer
- Refrigerator
- Washer
- Electric Cooktop
- Electric Oven
- Warming Drawer
- Microwave
- Gas Water Heater
- Clubhouse
- Common Areas
- Golf
- Pool
- Tennis Court(s)
- Community Center
- Common Area Ins.
- Pool
- Recreation Facilities
- Street Lights
- 2 Story Foyer
- High Ceilings
- Ceiling Fan(s)
- Ceiling - Cathedral/Vaulted
- Ceiling - Smooth
- Tray Ceiling(s)
- Central Vacuum
- Granite Counters
- Walk-In Closet(s)
- Second Living Quarters
- Split Floor Plan
- Ceiling "Dropped"
- Underground Utilities
- Cable Available
- Gas Log
- Tilt Out Windows
- Insulated Windows
- 1/2 Acre Or Less
- Corner Lot
- Sloped
- Few Trees
- Traditional

This listing was provided courtesy of RE/MAX Reach

[https://homesforsalelistings.net/properties/240-penick-drive/duncan/sc/29334/MLS\\_ID\\_1534195](https://homesforsalelistings.net/properties/240-penick-drive/duncan/sc/29334/MLS_ID_1534195)

