

120 Awendaw Way Greenville, SC 29607

\$246,900 :: 3 Bedrooms / 2.5 Bathrooms

(843) 478-8061

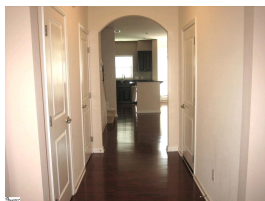


Subdivision: Townes at Cardinal Creek
Middle School: Mauldin
High School: Mauldin
Square Feet: 1599
Home Style:
Year Built:
MLS ID: 1534785



Description of property at 120 Awendaw Way:

Super Nice 3BR/2.5BA townhome in the desirable Woodruff Rd corridor close to I-385/I-85, Restaurants, Shopping, Mauldin Schools, Wal-Mart and Starbucks! Enjoy the "maintenance free life!" This townhome offers traditional styling with a modern, open feel and natural light. The foyer greets guests with hardwoods & pretty arched entryways that leads to the Spacious Great Room with Gas Log Fireplace. The well-appointed gourmet kitchen features 42" cherry java cabinets w/crown molding, granite countertops, stainless steel appliances and high-top bar, perfect for entertaining and family gatherings. Upstairs you'll find a generous sized Primary Bedroom retreat overlooking a private backyard with mature trees. The elegant Primary Bath features dual sinks, raised vanity, and a large walk-in shower complete with bench and gorgeous ceramic tile & surround. Two additional bedrooms & large bathroom plus walk-in laundry complete the 2nd floor. Enjoy outdoor living on your patio with privacy overlooking mature trees. Priced to Sell quickly and won't last long! Affordable Elegance at its finest.



Lot features

- 2nd Floor • Walk-in • Laundry Room • Carpet • Ceramic Tile • Wood • Electric
- Smoke Detector(s) • Dishwasher • Disposal • Refrigerator • Electric Oven • Range
- Microwave • Tankless Water Heater • Composition • Common Areas • Street Lights
- Recreational Path • Lawn Maintenance • Landscape Maintenance • By-Laws • Maintenance Structure
- Maintenance Grounds • Restrictive Covenants • Street Lights • Trash • High Ceilings
- Ceiling Fan(s) • Ceiling - Smooth • Granite Counters • Open Floorplan • Walk-In Closet(s)
- Underground Utilities • Cable Available • Gas Log • Ventless • Window Treatments
- Storm Window(s) • Tilt Out Windows • Attic Stairs Disappearing • Traditional

This listing was provided courtesy of South Carolina Realty Associat

https://homesforsalelistings.net/properties/120-awendaw-way/greenville/sc/29607/MLS_ID_1534785

