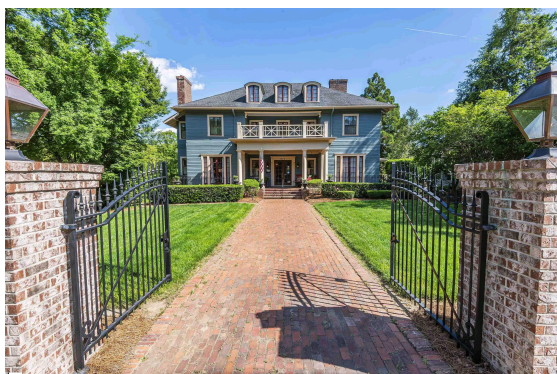


# 571 Main Street Spartanburg, SC 29302

**\$1,500,000 :: 4 Bedrooms / 2.5 Bathrooms**

(843) 478-8061



**Subdivision:** Converse Heights  
**Middle School:** McCracken  
**High School:** Spartanburg  
**Square Feet:** 5599  
**Home Style:**  
**Year Built:**  
**MLS ID:** 1537402



### Description of property at 571 Main Street:

Zoned for Residential and Commercial! The extraordinary Charles Pinckney Wofford House, a true gem that captures the essence of timeless elegance. Originally constructed in 1909, this remarkable property has undergone meticulous restoration over the past decade, ensuring its grandeur and beauty are preserved for generations to come. Nestled across from Converse College, this distinguished home proudly serves as the gateway to Converse Heights. Designed by renowned Atlanta architect, Gottfried Norman, the Wofford House seamlessly blends neoclassical architecture with elements inspired by the arts and crafts movement. The result is a harmonious fusion of generous arches, stately columns, and captivating design. Step through the original tongue and groove French doors into the enchanting foyer, adorned with a captivating barrel ceiling. To the right, you'll find the West Parlor, an ideal space for a study or library, exuding an air of sophistication. On the opposite side, the inviting East Parlor welcomes you with a beautiful fireplace, creating a cozy ambiance. Prepare to be captivated by the dining room, an elegant haven for hosting memorable gatherings. Connected to the dining room is a butler's pantry, seamlessly leading to a stunning kitchen. Boasting commercial-grade appliances, granite countertops, a spacious breakfast bar, and custom cabinetry, this kitchen is a culinary enthusiast's dream come true. From the kitchen, guests and family can effortlessly transition to the oversized covered porch, perfect for savoring after-dinner cocktails while overlooking the meticulously manicured landscaping. Ascend the awe-inspiring staircase to discover four bedrooms and two beautifully renovated full baths. These baths showcase exquisite basket weave marble tile floors, exuding a sense of luxury and refinement. The master suite is a haven, featuring a fireplace, a dressing room, and an en suite bathroom. Adjacent to the master suite, you'll find a charming office, formerly known as the sleeping porch, adding a touch of nostalgia and character. The fourth bedroom, currently utilized as a cozy den, offers versatility and comfort. Completing the second floor are two guest bedrooms and a private balcony, providing a tranquil retreat. Venture up another flight of stairs to unveil the third-floor heated/cooled attic, a versatile space that can be utilized for additional storage, this additional space adds to the allure and functionality of the home. Notably, the Wofford House has been featured in various esteemed publications and newspapers, a testament to its exceptional design and craftsmanship. Every detail of this tasteful renovation has been thoughtfully considered, ensuring a seamless blend of modern amenities and timeless charm. Come and discover one of Spartanburg's crown jewels, situated in the most charming and desirable neighborhood. The Charles Pinckney Wofford House awaits, ready to welcome you into a world of refined elegance and unparalleled beauty.

- Balcony • 1st Floor • Walk-in • Wood • Other • Electric • Gas Cooktop • Dishwasher
- Double Oven • Electric Water Heater • Composition • None • None • High Ceilings
- Countertops-Solid Surface • Wet Bar • Pantry • Gas Log • Attic Stairs Permanent
- 1/2 Acre Or Less • Corner Lot • Few Trees • Colonial

**This listing was provided courtesy of Blackstream International RE**

[https://homesforsalelistings.net/properties/571-main-street/spartanburg/sc/29302/MLS\\_ID\\_1537402](https://homesforsalelistings.net/properties/571-main-street/spartanburg/sc/29302/MLS_ID_1537402)

