

202 Wharfdale Street Piedmont, SC
29673

**(843) 478-
8061**



\$314,900 :: 4 Bedrooms / 2.5 Bathrooms

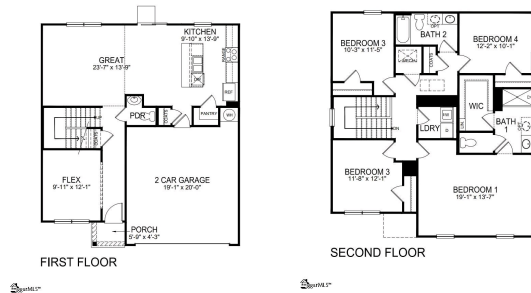


Subdivision: Cambridge Creek
Middle School: Woodmont
High School: Woodmont
Square Feet: 1999
Home Style:
Year Built: 2024
MLS ID: 1537834



Description of property at 202 Wharfdale Street:

Welcome to Cambridge Creek! This beautiful, tree-lined, Pool, Cabana and Tot Lot community is centrally located between Greenville and Anderson, both feature an array of shops, restaurants and activities! Plus, you will never be too far from home with our Safe Haven Smart Home. Your new home is built with an industry leading array of smart home products that keep you safe and connected with the people and place you value most! Cambridge Creek offers the best of both worlds with its quaint small-town charm yet big city convenience, with easy access to all of the desired locations for shopping, dining, parks, golf, hospitals, and more! This active community is perfect for all lifestyles which is why Cambridge Creek is a perfect place to call home! Upon entering the Belhaven floorplan you'll notice the flex room which has endless opportunities. The kitchen offers a standalone island equipped with granite and great cabinet space from there opens a huge Great Room with lots of natural lighting; great for entertaining. Upstairs you will find the Owner's Suite has plenty of closet space and the master bath has a separate walk-in 5' shower. This home has three other spacious bedrooms. This is an incredible floor plan with all the benefits of new construction and a 1/10 Warranty!



SMARTE

SMARTE

Lot features

- 2nd Floor • Electric Dryer Hookup • Walk-in • Washer Hookup • Laundry Room • Carpet
- Laminate • Vinyl • Electric • Smoke Detector(s) • Prewired • Dishwasher • Disposal
- Free-Standing Gas Range • Microwave • Tankless Water Heater • Composition • Common Areas
- Street Lights • Playground • Pool • Sidewalks • By-Laws • Common Area Ins. • None • Pool
- Restrictive Covenants • Street Lights • Ceiling - Smooth • Granite Counters • Open Floorplan
- Walk-In Closet(s) • Pantry • Underground Utilities • Cable Available • Gas Log • Tilt Out Windows
- Vinyl/Aluminum Trim • Insulated Windows • Attic Stairs Disappearing • 1/2 Acre Or Less • Traditional
- Craftsman

This listing was provided courtesy of D.R. Horton

https://homesforsalelistings.net/properties/202-wharfdale-street/piedmont/sc/29673/MLS_ID_1537834

