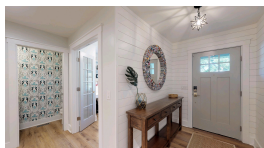


Subdivision: Lenevar
Middle School: C E Williams
High School: West Ashley
Square Feet: 2099
Home Style:
Year Built: 1966
MLS ID: 24015615



Description of property at 1375 Nye Street:

If you've been looking for a home that combines location, quality, value, convenience, and a "WOW" factor every time you walk in the door, don't miss this opportunity to own 1375 Nye Street! Located in West Ashley across the street from Charlestowne Landing, this designer home has been meticulously remodeled from the studs out, sparing no expense to become an oasis inside and out. You'll be impressed with the attention to detail and quality materials in every room. Remodeled from floors up to the raised and vaulted ceilings to including upscale LVP floors, new electrical and plumbing, custom walk-in closets and walk-in pantry systems, new Butler's pantry, separate office space, custom built-in cabinets and shelving, upscale doors, designer tile and counter tops, walls removed to open up living areas, kitchen cabinets with pull out ironing board and trash bin, upgraded appliances, range hood, pendant lighting, shiplap accents, and more! The primary bedroom has been extended and includes "his and hers" vanity space, and custom design walk-in closets. The remodel was completed with energy efficiency in mind, including tankless water heater, spray foam insulation, crawl space encapsulation and dehumidifier, garage finished with drywall, and high end energy efficient lighting throughout the home. You'll love relaxing and entertaining in the private back yard oasis, that includes a 144 sq foot fully finished building that is heated and cooled, and has electrical outlets to serve as an office (or second office) or build your "man cave or she shed", surrounded by 200 year old oak trees and lush, mature landscaping. There's also a transferable termite bond that includes repairs if any issues ever arise. Not in a flood zone and NO HOA! This home is old school on the outside, and new school on the inside! Location, location, location! 10 minutes to historic downtown Charleston, 10 minutes to the airport, 20 minutes to multiple beaches, 5 minutes to shopping, dining, and other services! Now that you've found the home that combines the very best of living the historic Charleston lifestyle you've always dreamed of, mark it as a favorite, and set your appointment to see it today!

Lot features

- Laundry Room • Wood • Trash • Ceiling - Smooth • High Ceilings • Kitchen Island
- Walk-In Closet(s) • Ceiling Fan(s) • Great • Office • Pantry • Sun • Utility • Dominion Energy
- 0 - .5 Acre • High • Interior Lot • Level • Wooded • Contemporary • Ranch • Ceiling Fan(s)