

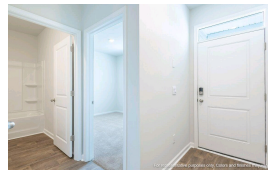
830 Lilyford Lane Summerville, SC 29486

\$345,000 :: 4 Bedrooms / 2 Bathrooms

(843) 478-8061



Subdivision: Cane Bay Plantation
Middle School: Berkeley
High School: Berkeley
Square Feet: 1482
Home Style:
Year Built: 2024
MLS ID: 24023646



Description of property at 830 Lilyford Lane:

FALL DELIVERY! Located on a fully flat and useable homesite, the Helena designed for efficiency and comfort is a 4-bedroom, 2-bathroom home with a 1 car garage, large driveway with ample space for 2 additional cars. Walking into the home you'll be greeted by wood inspired flooring to find 2 front bedrooms with a shared bathroom in between. Continue through the extended foyer you find another room just off the spacious kitchen, perfect for a home office or guests when they come to stay. The oversized laundry room is thoughtfully located in the center of the home. This home features gray cabinetry stainless steel appliances including a 5-burner gas range, microwave, dishwasher, refrigerator, garage door opener and tankless water heater. The primary suite at the back of the home features a large walk-in shower and walk in closet. This Ranch style home offers an inviting atmosphere ideal for both entertaining and everyday living. Pine Hills in Cane Bay, Summerville, offers a serene suburban lifestyle. Nestled amidst lush landscapes and elegant homes. Residents enjoy nearby parks, shopping, and dining, making it a family-friendly haven with a charming southern atmosphere. Amenities include 3 pools, with a 2-story water slide. Nearby is the largest YMCA on the East Coast, and the community offers easy access to I-26. All new homes include D.R. Horton's Home is Connected® package, an industry leading suite of smart home products that keeps homeowners connected with the people and places they value most. This smart technology allows homeowners to monitor and control their home from their couch or across the globe. Products include touchscreen interface, video doorbell, front door light, z-wave t-stat, and keyless door lock all of which are controlled by an included Alexa Dot and smartphone app with voice! Call to schedule your showing today and start envisioning your new life surrounded by nature's beauty! Directions: From Hwy 176, Turn onto Cane Bay Blvd. At the second traffic circle, take the third exit onto Fair winds Blvd. At the traffic circle take the first exit onto Horizon Ridge Drive. Turn right at Lake Ridge Drive. Turn left at Ivory Shadow Rd. Turn right on Lilyford Lane, home is on the right.

Lot features

- Laundry Room • Vinyl • Pond • Pond Site • Fiberglass • Pool • Trash • Ceiling - Smooth
- High Ceilings • Kitchen Island • Walk-In Closet(s) • Eat-in Kitchen • Family • Entrance Foyer
- Living/Dining Combo • Pantry • BCW & SA • Berkeley Elect Co-Op • Dominion Energy
- Thermal Windows/Doors • Window Treatments • 0 - .5 Acre • Level • Traditional

This listing was provided courtesy of D R Horton Inc

https://homesforsalelistings.net/properties/830-lilyford-lane/summerville/sc/29486/MLS_ID_24023646

