

\$524,000 :: 3 Bedrooms / 2.5 Bathrooms

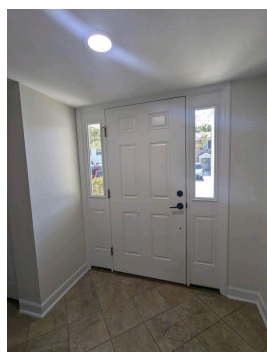


Subdivision: Heritage Village
Middle School: Moultrie
High School: Lucy Beckham
Square Feet: 1344
Home Style:
Year Built: 1974
MLS ID: 24024432



Description of property at 328 Lakeside Drive:

The best location in Mount Pleasant! This beautiful, move-in ready, fully updated 3 bedroom, 2.5 bath townhouse in the Heritage Village subdivision is the ideal place for you to live if you are looking for convenience, nearby schools and parks and anything else you could need! Quietly nestled between Mathis Ferry Road and Johnnie Dodds Blvd., it's just minutes to downtown, I-526, excellent shopping, and the beaches. This townhouse really stands out with its location right on the neighborhood lake with a screened-in porch in back, creating an "outside room" for you to relax and enjoy the water view and lovely weather. A value like this is very hard to find in Mt. Pleasant. Don't wait! You'll find many upgrades and nice features in this move-in ready townhouse in the best location in Mt. Pleasant! The entire unit has been freshly painted. There's a newly renovated bathroom in the primary bedroom with a shower and it has a sliding barn door. The second full bath has been updated as well. The two back bedrooms have views of the water. There are solid hardwood floors in all three bedrooms with plenty of closet space including a linen closet in the hall and one in the main bathroom. All three bedrooms have brand new, remote-controlled ceiling fans with lights. The kitchen is fully equipped with lots of storage, custom cabinets, granite countertops, stainless steel appliances (including a new refrigerator), stacked washer and dryer, and plenty of space for a dining table and chairs or a kitchen island. The spacious downstairs living room offers plenty of space for entertaining. The screened-in porch off the back offers additional living and entertainment space with a view of the water. There's even an area outside the porch for a garden. The neighborhood is quiet and well-maintained. Each unit has two assigned parking spaces in front with additional guest spaces nearby. There is a pool, a clubhouse, a basketball court, a tennis court and a boat storage area for all residents.



Lot features

- Ceramic Tile • Vinyl • Wood • Pond • Asphalt • Clubhouse • Lawn Maint Incl • Pool
- RV/Boat Storage • Tennis Court(s) • Trash • Ceiling - Smooth • Ceiling Fan(s)
- Living/Dining Combo • Dominion Energy • Mt. P. W/S Comm • 0 - .5 Acre

This listing was provided courtesy of homecoin.com

https://homesforsalelistings.net/properties/328-lakeside-drive/mount-pleasant/sc/29464/MLS_ID_24024432