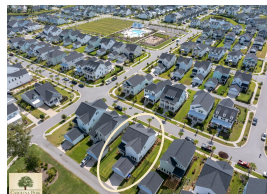


**\$1,025,000 :: 4 Bedrooms / 3 Bathrooms**



**Subdivision:** Carolina Park  
**Middle School:** Cario  
**High School:** Wando  
**Square Feet:** 2840  
**Home Style:**  
**Year Built:** 2021  
**MLS ID:** 24024950



**Description of property at 1800 Agate Bay Drive:**

Welcome home to The Village at Carolina Park! Enjoy the huge front porch and engage with the community around you. This immaculately maintained 4 bedroom, 3 full bath home is just 3 years young, and offers a first floor guest room with en suite bath AND a separate office space on the main floor! The downstairs is truly open concept and features a chefs kitchen with a huge L-shaped island, gas cook-top with stainless range hood, oversized pantry with custom shelving and wall ovens. Enjoy your family or guests while prepping your favorite meal! The dining and family room blend seamlessly with the kitchen to create a fabulous entertaining experience. Cozy up beside the gas fireplace on cool evenings or enjoy morning coffee on the back porch and soak up some South Carolina sunshine! Upstairs you will find the primary bedroom with His and Hers closets, a spacious en suite bathroom featuring double sinks, luxurious tiled shower with frameless glass door, separate water closet and linen storage. Two additional upstairs bedrooms share a second full bath with double sinks. An upstairs laundry room & loft completes the area offering a kids play space or separate entertaining area. Head downstairs to the large back porch looking out over natural green space. The detached 2 car garage offers plenty of parking and overhead storage, with a rear entry access. Pups and kids will enjoy the fully fenced backyard with paver walkways and grilling area. Engage with your neighbors in the amazing community amenities. Carolina Park really does promote an outdoor lifestyle offering pool, play park, bark park, as well as tennis, pickle ball, outdoor pavilion and miles of walking and jogging trails. Schedule your showing TODAY!

**Lot features**

- Laundry Room • Ceramic Tile • Security System • Dog Park • Park • Pool • Tennis Court(s)
- Walk/Jog Trails • Ceiling - Smooth • High Ceilings • Kitchen Island • Walk-In Closet(s) • Family
- Loft • Office • Pantry • Separate Dining • Berkeley Elect Co-Op • Dominion Energy
- Mt. P. W/S Comm • Family Room • Gas Log • One • Thermal Windows/Doors
- Window Treatments - Some • 0 - .5 Acre • Level • Traditional • Multiple Closets
- Walk-In Closet(s)

**This listing was provided courtesy of ERA Wilder Realty Inc**

[https://homesforsalelistings.net/properties/1800-agate-bay-drive/mount-pleasant/sc/29466/MLS\\_ID\\_24024950](https://homesforsalelistings.net/properties/1800-agate-bay-drive/mount-pleasant/sc/29466/MLS_ID_24024950)

