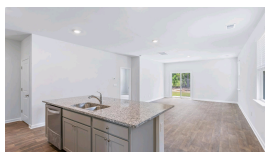
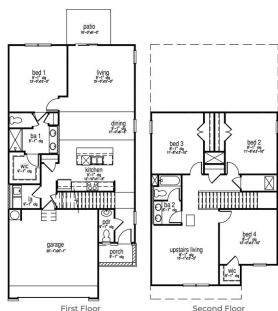


\$427,565 :: 4 Bedrooms / 2.5 Bathrooms



Subdivision: Carolina Groves
Middle School: Berkeley
High School: Berkeley
Square Feet: 2203
Home Style:
Year Built: 2024
MLS ID: 24025748



Description of property at 310 Blue Haw Drive:

READY THIS FALL! Welcome to The Manning, a charming abode nestled on an expansive lot in the scenic community of Carolina Groves. From the moment you arrive, you're greeted by the serene surroundings and the community's amenities just across the street. Imagine starting your day with a refreshing swim in the resort-style pool or enjoying a leisurely evening by the fire pit in the clubhouse area--just moments from your front door. Step inside The Manning, and you'll be captivated by its welcoming entryway, thoughtfully designed with a convenient powder room near the front. As you continue, you'll find yourself in an inviting open-concept space where the kitchen, dining, and living areas seamlessly blend together with luxury vinyl plank floors throughout the entire first floor. The centerpiece of the kitchen is a large quartz countertop island, beautifully complemented by the sleek designer cabinets. The space is not only stylish but highly functional, featuring a gas range, an exterior-vented hood, a microwave, a stainless refrigerator, and a dishwasher. A hallway leads from the kitchen to the two-car garage entrance and a spacious laundry room, making everyday tasks a breeze. At the rear of the home on the first floor, the sprawling master suite awaits. This tranquil retreat includes dual vanities, a water closet, and a generously-sized walk-in closet. Upstairs, the home continues to impress with three large guest bedrooms and a substantial loft area perfect for relaxing or entertaining. A full bath with dual vanities serves the upper floor, ensuring ample space for family and guests. The Manning is more than just a house; it's a place where comfort meets convenience in a community designed for living well. Welcome to Carolina Groves, located in tranquil Moncks Corner, SC conveniently located off of Hwy 52. Developed by D.R Horton, this new construction community offers a home for every stage of life starting in the low \$300s. Not only do our homes excel in high efficiency performance, resulting in significant monthly savings on your bills, they are also certified Energy Star rated. Enjoy our amenities including a walk-in resort style pool, grilling area with prep kitchen, outdoor pavilion, playground, and more! In this peaceful community surrounded by ponds and wooded landscape, you will enjoy living in this community. It's the perfect getaway whether you're a first-time homebuyer, a growing family, or just looking to downsize. This community has something for everyone wanting to own their piece of the low country. All new homes include D.R. Horton's Home is Connected® package, an industry leading suite of smart home products that keeps homeowners connected with the people and places they value most. This smart technology allows homeowners to monitor and control their home from their couch or across the globe. Products include touchscreen interface, video doorbell, front door light, z-wave t-stat, and keyless door lock all of which are controlled by an included Alexa Dot and smartphone app with voice! Call to schedule your showing today and start envisioning your new life surrounded by

nature's beauty! *Square footage dimensions are approximate. The photos you see here are for illustration purposes only, interior, and exterior features, options, colors and selections will differ. Please reach out to sales agent for options

Lot features

- Vinyl • Fiberglass • Ceiling - Smooth • Kitchen Island • Walk-In Closet(s) • Eat-in Kitchen
- Family • Living/Dining Combo • Pantry • Thermal Windows/Doors • ENERGY STAR Qualified Windows
- 0 - .5 Acre • Wooded • Traditional

This listing was provided courtesy of D R Horton Inc

https://homesforsalelistings.net/properties/310-blue-haw-drive/moncks-corner/sc/29461/MLS_ID_24025748

