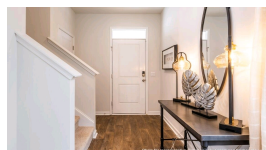
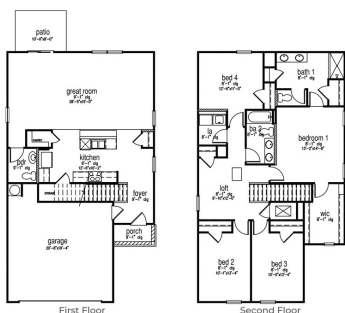


350 Willows Crescent Drive Moncks Corner, SC 29461

(843) 478-8061



\$400,585 :: 4 Bedrooms / 2.5 Bathrooms



Subdivision: Lakeview at Kitfield
Middle School: Berkeley
High School: Berkeley
Square Feet: 2174
Home Style:
Year Built: 2024
MLS ID: 24026390



Description of property at 350 Willows Crescent Drive:

The Elston floorplan features a large kitchen and great room divided by a kitchen island, perfect for a combined living and dining space. The first floor also features a half bath. On the second floor, you are greeted by a versatile loft space and the laundry room. The spacious primary bedroom features a large bath with a dual vanity and substantial walk-in closet. The other three bedrooms are also on the second floor as well as another full bathroom. This beautiful home is situated on a corner lot. Discover your dream home at Lakeview at Kitfield! Perfectly situated near incredible attractions Lake Moultrie, the Berkeley County Museum, and Old Santee Canal Park, you'll enjoy the best of small town living with all the conveniences of a bustling city just 30 minutes away. All new homes include D.R. Horton's Home is Connected® package, an industry leading suite of smart home products that keeps homeowners connected with the people and places they value most. This smart technology allows homeowners to monitor and control their home from their couch or across the globe. Products include touchscreen interface, video doorbell, front door light, z-wave t-stat, and keyless door lock all of which are controlled by an included Alexa Dot and smartphone app with voice! Call to schedule your showing today and start envisioning your new life surrounded by nature's beauty! *Square footage dimensions are approximate. The photos you see here are for illustration purposes only, interior, and exterior features, options, colors and selections will differ. Please reach out to sales agent for options.

Lot features

- Vinyl • Fiberglass • Ceiling - Smooth • Kitchen Island • Walk-In Closet(s) • Eat-in Kitchen
- Family • Living/Dining Combo • Pantry • Thermal Windows/Doors • 0 - .5 Acre • Wooded
- Victorian

This listing was provided courtesy of D R Horton Inc



https://homesforsalelistings.net/properties/350-willows-crescent-drive/moncks-corner/sc/29461/MLS_ID_24026390