

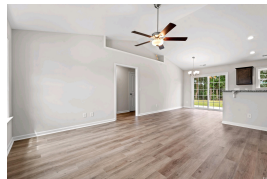
619 Snowy Owl Way Conway, SC 29527

\$232,367 :: 3 Bedrooms / 2 Bathrooms

(843) 478-8061



Subdivision: Night Owl Farms
Middle School: Aynor Middle School
High School: Aynor High School
Square Feet: 1228
Home Style:
Year Built: 2024
MLS ID: 2415095



Description of property at 619 Snowy Owl Way:

Night Owl Farms is proud to offer the Augustus floor plan! In this Move-In Ready Home you will enjoy 3 bedrooms all on one level with light and bright kitchen and family room that incorporates an open layout. Designer kitchen featuring a cozy breakfast nook, stainless Steel appliances, profiled Aristokraft™ Shaker style Cabinets with hardware, Granite countertops with a polished stainless steel sink, waterproof laminate flooring in main living areas with stain resistant carpet in bedrooms. Interior trim package includes window casings and stool for durability and appeal, relaxing baths with cultured marble countertops with integral bowl; executive height vanities in all bathrooms; elongated toilets; contoured fiberglass shower and tub units. Maintenance free exterior features such as premium vinyl siding, soffits and fascia; and high performance GAF™ Architectural shingles. Night Owl Farms is located off of Hwy 501 just 20 minutes to Downtown Conway and minutes from Hwy 22 with quick access to Myrtle Beach, Little River, North Myrtle Beach, etc. Building lifestyles for over 35 years, we remain the Premier Homebuilder of new residential communities and custom homes in the Grand Strand and surrounding areas. In 2022, 2021, and 2023 we received the Best Home Builder award from WMBF News Best of the Grand Strand. We want you to experience the local pride we build today and every day in Horry and Georgetown Counties. We are excited to welcome you home at Night Owl Farms! Photos, colors, and layouts are for illustration purposes only and can vary from home to home. Customization may be possible – call listing agent for availability. Square footages are approximate.

Lot features

- Patio • Washer Hookup • Carpet • Laminate • Smoke Detector(s) • Dishwasher • Disposal
- Microwave • Range • Central • Common Areas • Trash • Split Bedrooms
- Stainless Steel Appliances • Solid Surface Counters • Electricity Available • Sewer Available
- Water Available • Outside City Limits • Rectangular • Ranch

This listing was provided courtesy of The Beverly Group

https://homesforsalelistings.net/properties/619-snowy-owl-way/conway/sc/29527/MLS_ID_2415095

