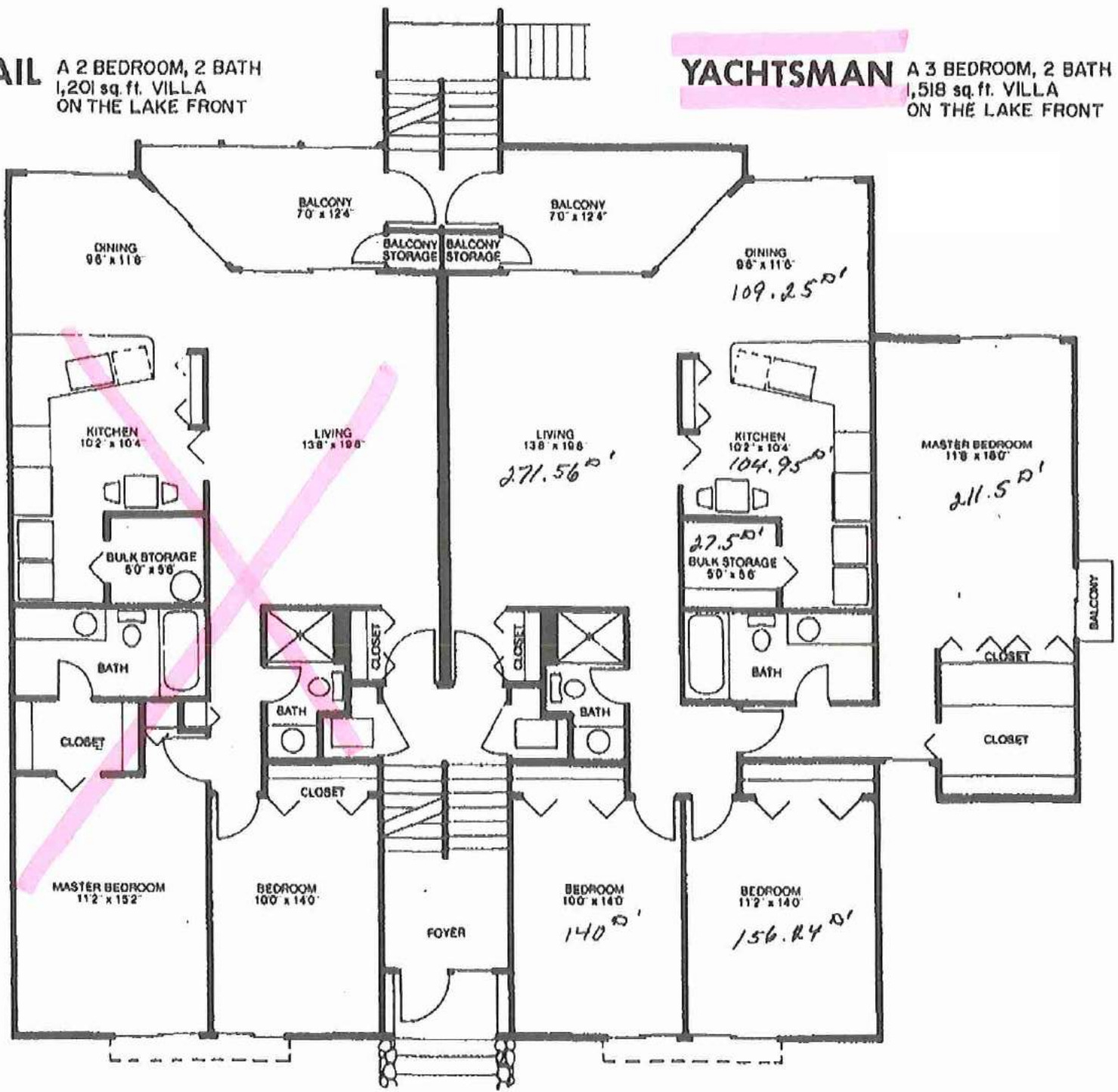
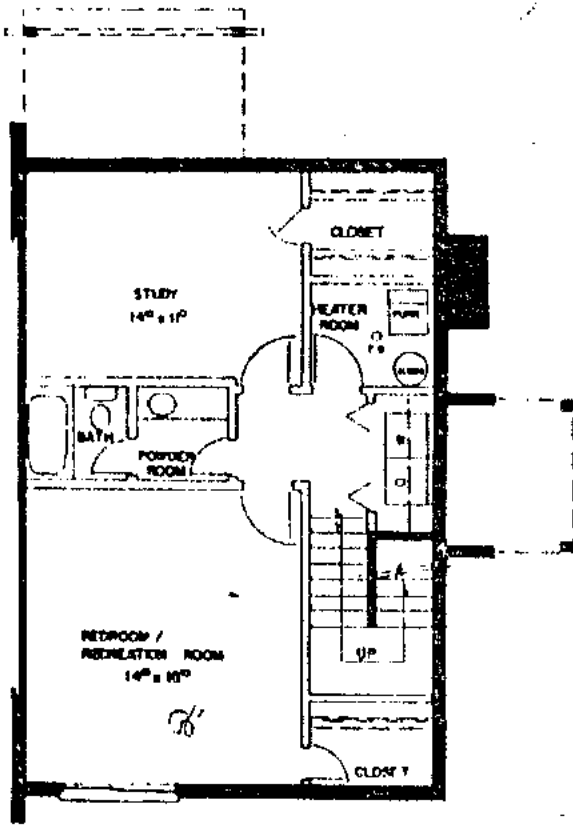


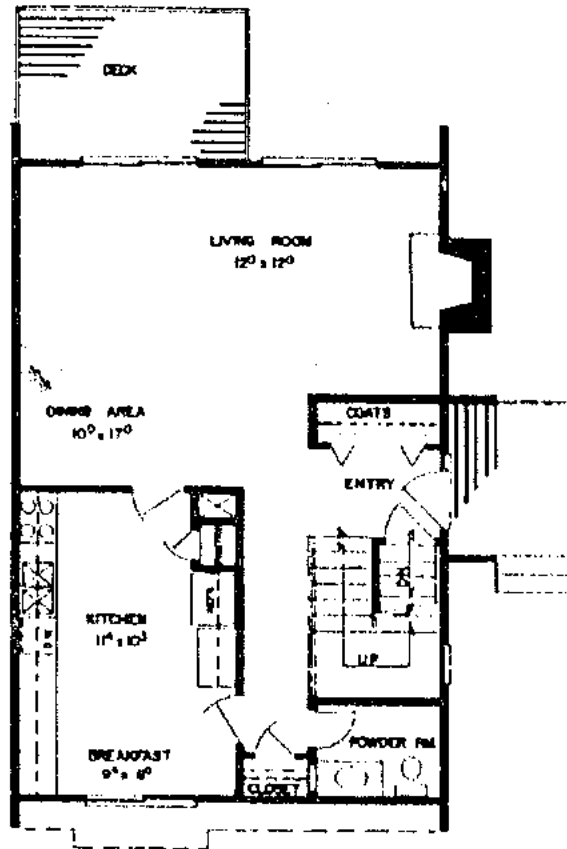
TOPSAIL A 2 BEDROOM, 2 BATH
 1,201 sq. ft. VILLA
 ON THE LAKE FRONT

YACHTSMAN A 3 BEDROOM, 2 BATH
 1,518 sq. ft. VILLA
 ON THE LAKE FRONT

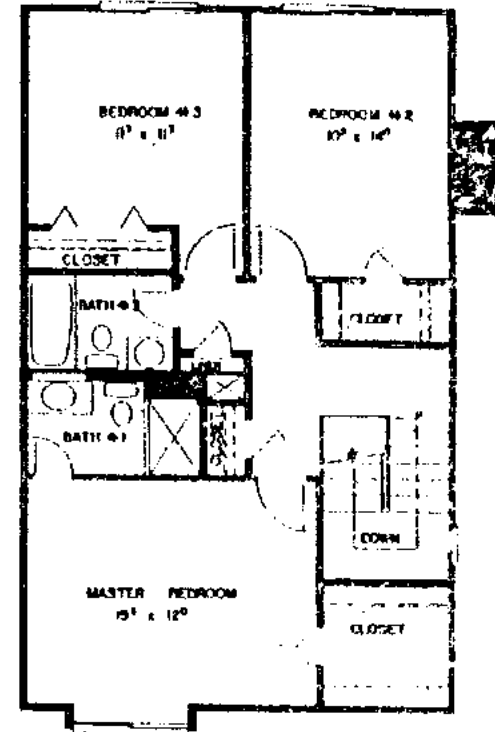




BASEMENT



FIRST FLOOR



SECOND FLOOR

ADMIRAL

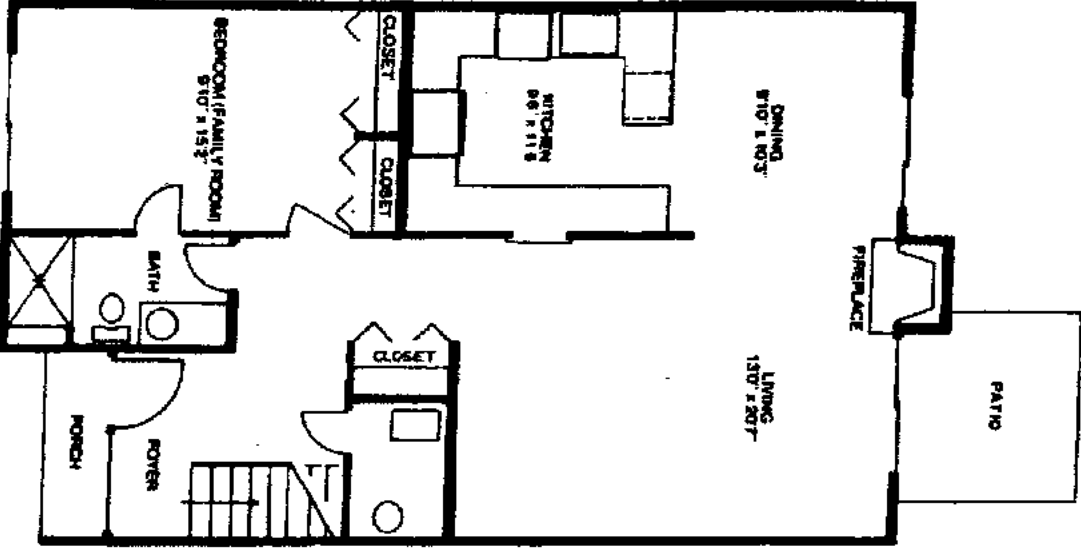
1630 SQ. FT. WITH **770** SQ. FT.

BASIC

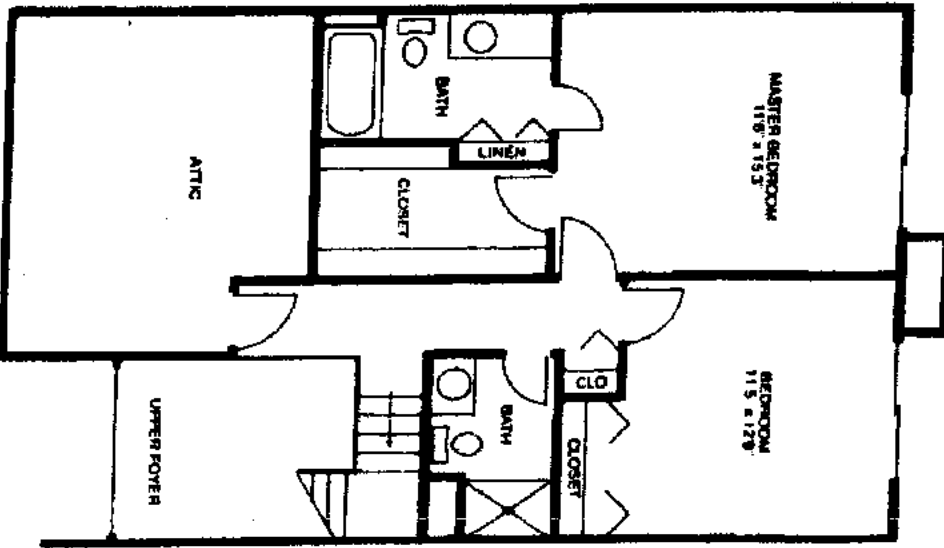
OPTIONAL

CLIPPER I

A 3 BEDROOM, 3 BATH 1,606 sq. ft.
TWO STORY FLAT PLUS ATTIC STORAGE



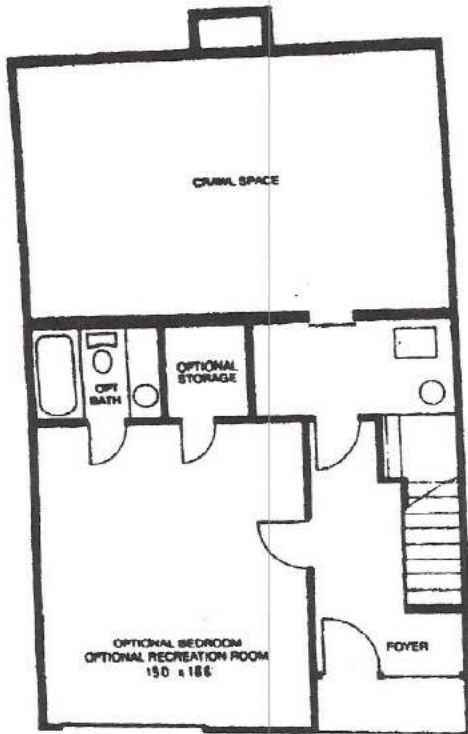
FIRST FLOOR PLAN



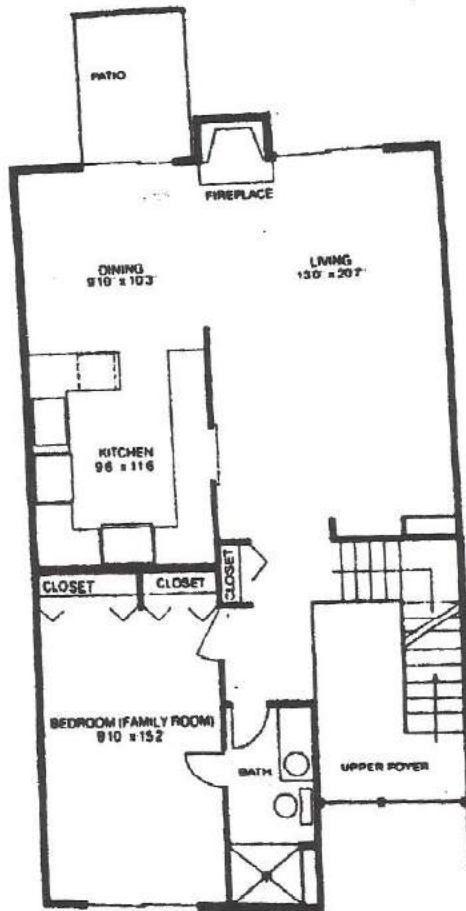
SECOND FLOOR PLAN

CLIPPER II

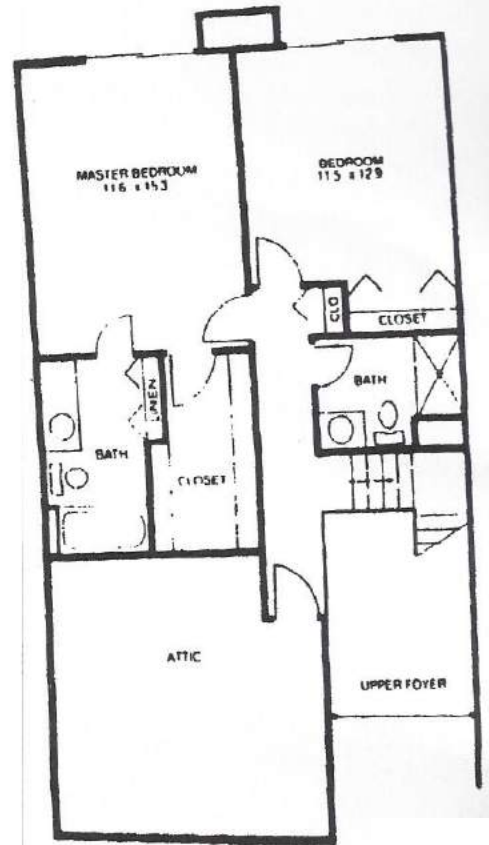
A 3 BEDROOM, 3 BATH 2,181 sq. ft. TOWNHOUSE
 WITH BEDROOM AND BATH
 OR RECREATION ROOM AND BATH



BASEMENT PLAN



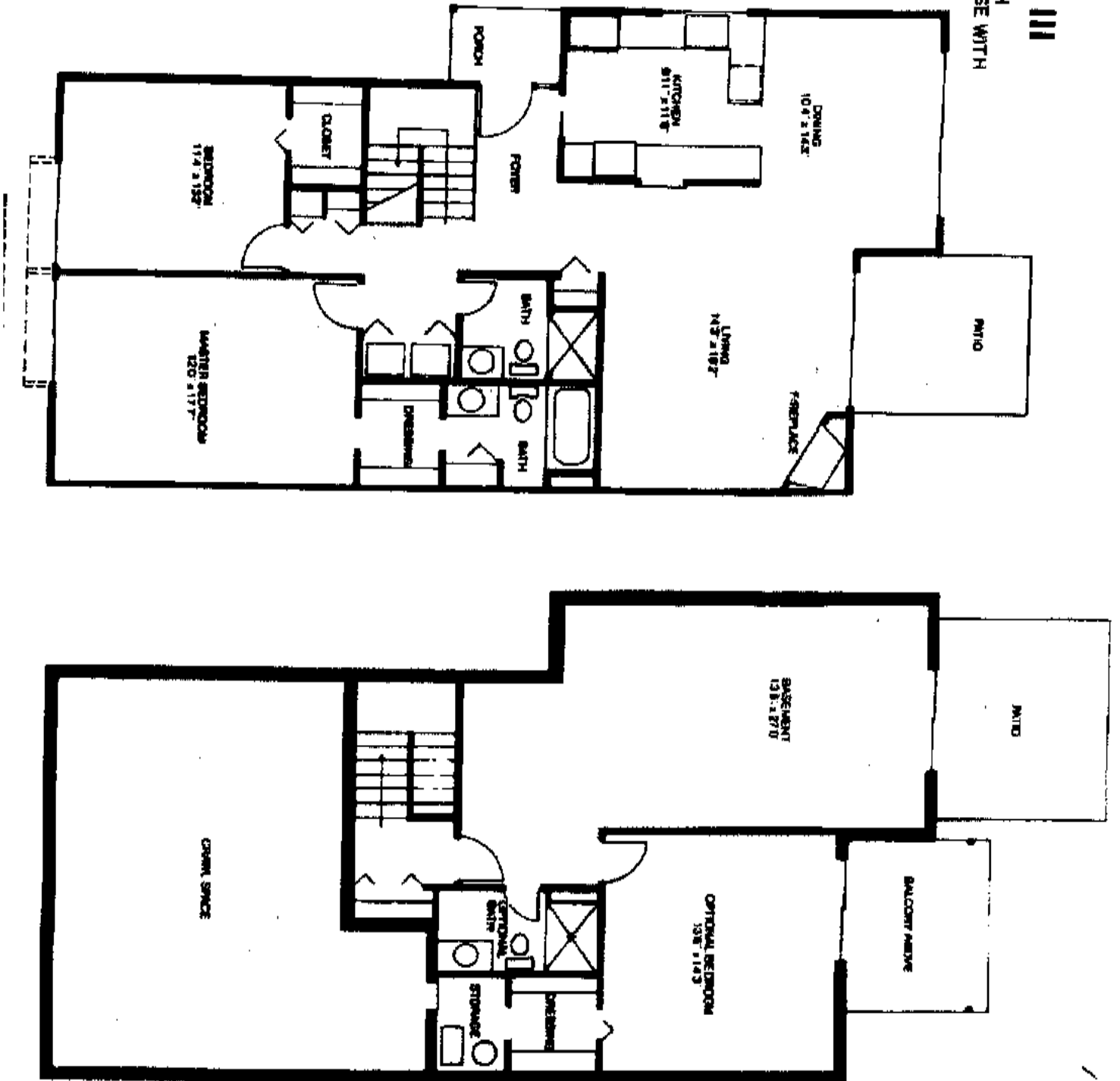
FIRST FLOOR PLAN



SECOND FLOOR PLAN

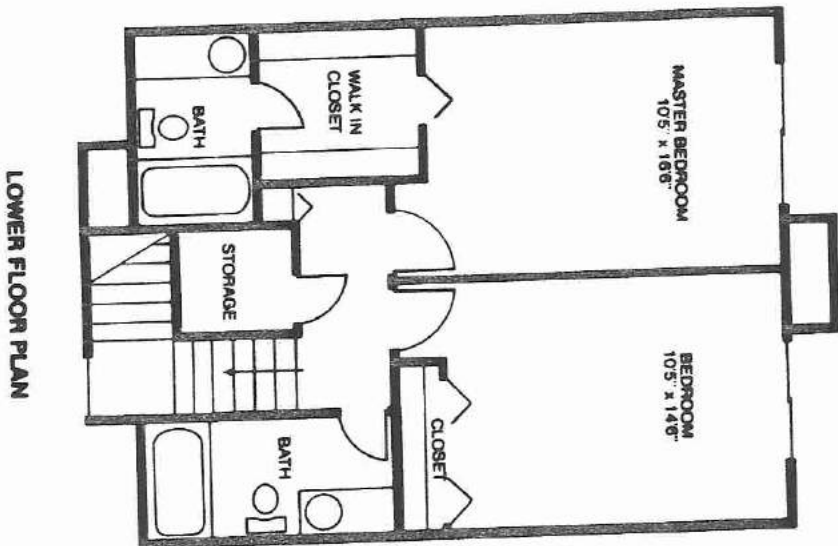
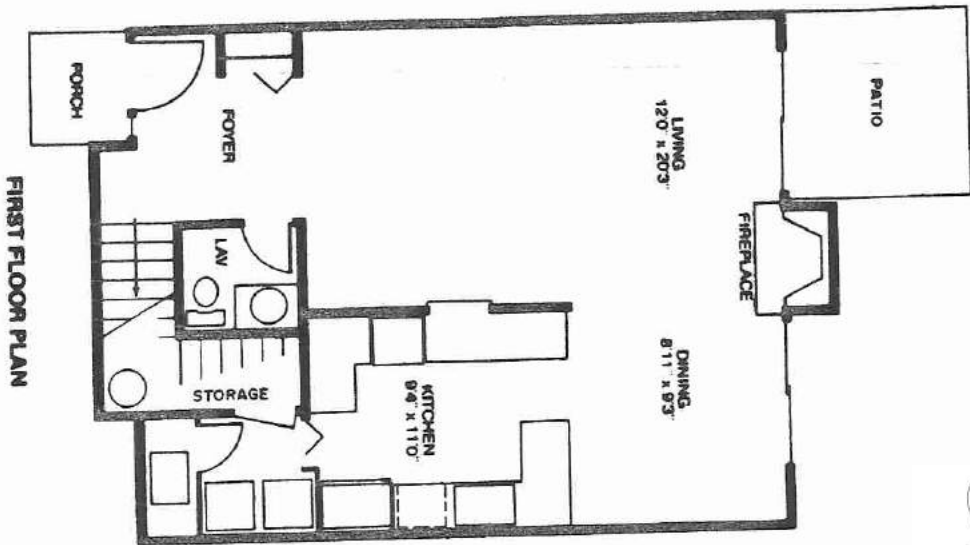
SCHOONER III

A 2 BEDROOM, 2 BATH
 2,178 sq ft TOWNHOUSE WITH
 RECREATION ROOM,
 BEDROOM AND BATH



SLOOP I

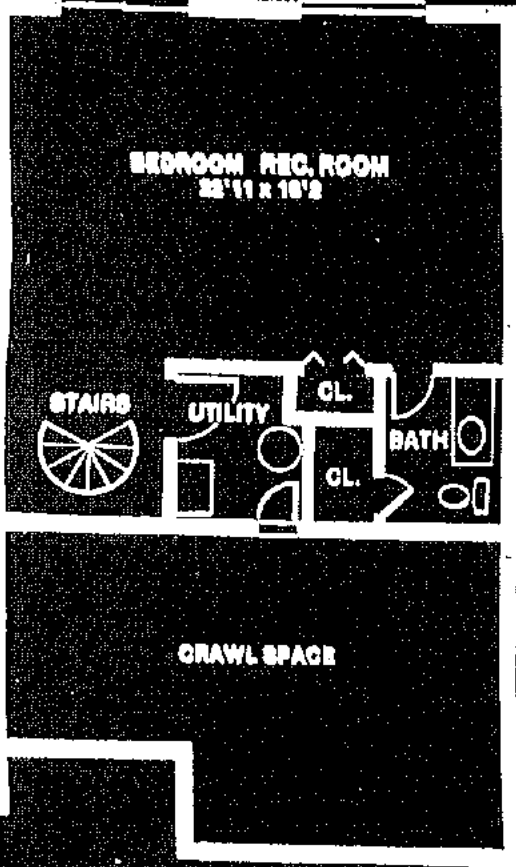
A 2 BEDROOM, 2-1/2 BATH
1,321 sq. ft. TWO STORY FLAT



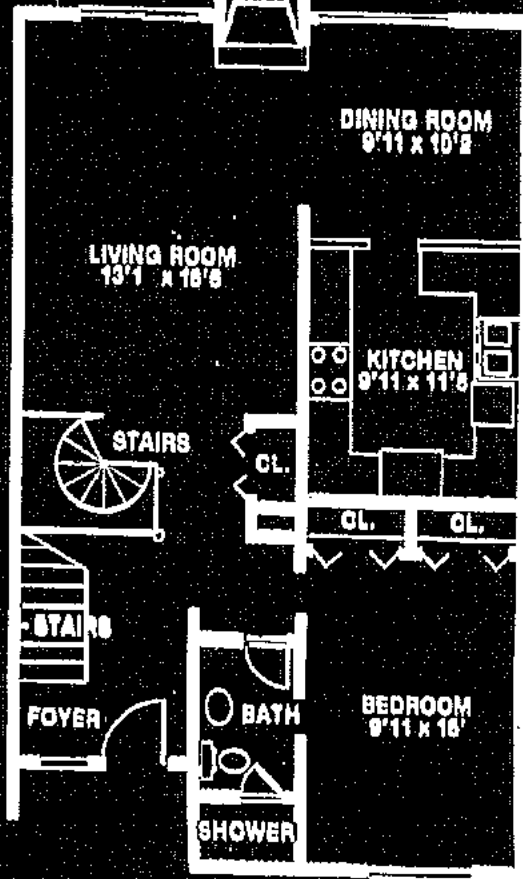


PATIO

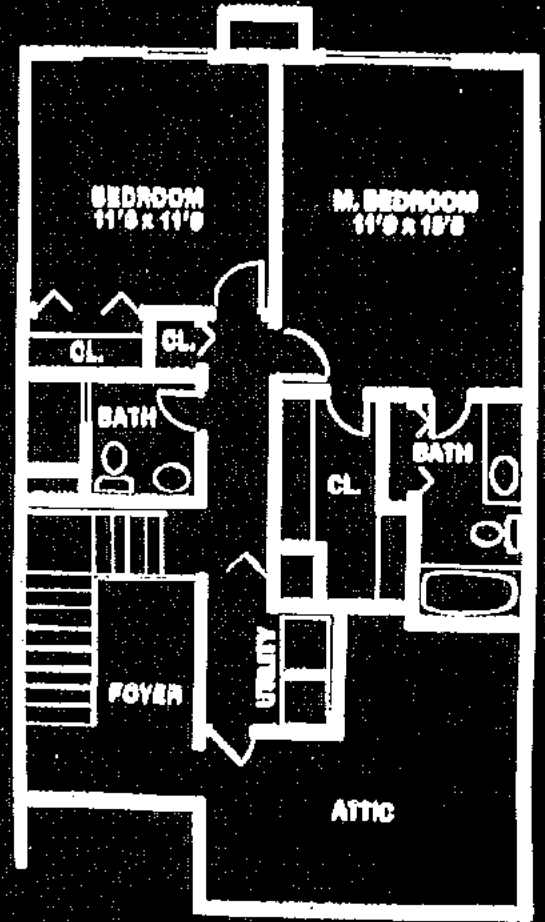
BALCONY



BASEMENT



FIRST FLOOR



SECOND FLOOR

THE COMMODORE

YACHTSMAN

A 3 BEDROOM, 2 BATH
1,518 sq. ft. VILLA
ON THE LAKE FRONT

